



REVIEW ARTICLE OPEN

Advantages of targeting the tumor immune microenvironment over blocking immune checkpoint in cancer immunotherapy

Tianyu Tang^{1,2,3,4}, Xing Huang^{1,2,3,4}, Gang Zhang^{1,2,3,4}, Zhengtao Hong^{1,2,3,4}, Xueli Bai^{1,2,3,4} and Tingbo Liang^{1,2,3,4}

Despite great success in cancer immunotherapy, immune checkpoint-targeting drugs are not the most popular weapon in the armory of cancer therapy. Accumulating evidence suggests that the tumor immune microenvironment plays a critical role in anti-cancer immunity, which may result in immune checkpoint blockade therapy being ineffective, in addition to other novel immunotherapies in cancer patients. In the present review, we discuss the deficiencies of current cancer immunotherapies. More importantly, we highlight the critical role of tumor immune microenvironment regulators in tumor immune surveillance, immunological evasion, and the potential for their further translation into clinical practice. Based on their general targetability in clinical therapy, we believe that tumor immune microenvironment regulators are promising cancer immunotherapeutic targets. Targeting the tumor immune microenvironment, alone or in combination with immune checkpoint-targeting drugs, might benefit cancer patients in the future.

Signal Transduction and Targeted Therapy (2021)6:72; <https://doi.org/10.1038/s41392-020-00449-4>

INTRODUCTION

To date, immune checkpoint (ICP)-targeting drugs, such as anti-cytotoxic T-lymphocyte-associated protein 4 (CTLA-4), anti-programmed cell death protein 1 (PD-1), and anti-PD-1 ligand 1 (PD-L1), have displayed considerable success in a number of cancer immunotherapies,^{1–4} including melanoma, lung cancer, and other commonly diagnosed cancers. Accordingly, ICP blockade-based therapeutic strategies have been championed in cancer research and therapy, often in the name of patient benefit. Currently, for patients with advanced head and neck squamous cell carcinoma, non-small cell lung cancer (NSCLC, squamous and non-squamous carcinoma), melanoma, urothelial and kidney cancers, Merkel cell carcinoma, refractory Hodgkin lymphoma, microsatellite instability-high colorectal cancer, gastric cancer, and hepatocellular carcinoma, therapeutic ICP blockade has become a part of the standard of care. Clinical trials have been initiated to investigate their efficacy for the treatment of additional malignant diseases.^{5–9} However, increasing numbers of studies have shown that the positive response rate among patients receiving immune checkpoint-targeting drugs remains quite low, an issue that remains to be solved.^{10,11} Previous studies have demonstrated that in the majority of the cases, clinical benefit is commonly prevented by acquired resistance to the tumor and primary tumor refractoriness to the ICP-targeting drugs.¹² Furthermore, clinical decisions to use these drugs, especially dual CTLA-4 and PD-1 blockade, should consider their potential to induce high-grade immune-related adverse events. Thus, the clinical practice of checkpoint-targeting therapy remains problematic.

Increasing evidence strongly suggests that the tumor immune microenvironment (TIME) plays a more significant role than ICPs in

tumor immune surveillance and immunological evasion.^{13–15}

Many multiple factors co-contribute to anti-cancer immunity, and ICPs are just one weapon used by tumors to resist attack from the immune system.¹⁶ Therefore, further improvements are required for therapeutic precision to limit the side-effects of therapies that are based on targeting ICPs, in addition to other cancer therapies that are both relevant or not. In the present review, we aim to provide new insights into current cancer immunotherapy and reveal potential antitumor immunological targets in the TIME that overcome immunotherapeutic resistance in clinical applications. We highlight the significance and superiority of targeting TIME regulators in anti-cancer immunotherapy. Furthermore, we discuss the potential and feasibility of combined treatments to boost a controllable anti-cancer immune response.

LESSONS LEARNED FROM IMMUNE CHECKPOINT-TARGETING CANCER THERAPY

Drugs that target ICPs, including but not limited to anti-CTLA-4 and anti-PD-1/PD-L1, significantly improve the prognosis of advanced cancer patients. However, an increasing number of recent reports have provided contrary but convincing evidence of non-negligible defects in ICP-targeting strategies, which might have negative consequences for their therapeutic efficacy.^{17–22} Generally, the efficacy of ICP therapy is restricted by three major factors: (1) burden of tumor mutation, (2) PD-L1 expression level, and (3) pre-existing T-cell infiltration. In fact, with the exception of melanoma,²³ Merkel cell carcinoma,²⁴ and Hodgkin disease,²⁵ the response rate to ICP monotherapy remains low in several specific malignancies, including pancreatic cancer, cholangiocarcinoma,

¹Zhejiang Provincial Key Laboratory of Pancreatic Disease, The First Affiliated Hospital, School of Medicine, Zhejiang University, 310003 Hangzhou, Zhejiang, China; ²Department of Hepatobiliary and Pancreatic Surgery, The First Affiliated Hospital, School of Medicine, Zhejiang University, 310003 Hangzhou, Zhejiang, China; ³Innovation Center for the Study of Pancreatic Diseases, Zhejiang Province, 310003 Hangzhou, Zhejiang, China and ⁴Zhejiang University Cancer Center, 310003 Hangzhou, Zhejiang, China

Correspondence: Xing Huang (huangxing66@zju.edu.cn) or Tingbo Liang (liangtingbo@zju.edu.cn)

These authors contributed equally: Tianyu Tang, Xing Huang

Received: 25 July 2020 Revised: 31 October 2020 Accepted: 7 December 2020

Published online: 20 February 2021

and gastric cancer.^{26–28} In these cases, the objective response rate ranges from 15 to 25%, with limited survival benefit.^{6,29–34} In addition, concerns over safety-related problems have arisen in multiple cancer therapies, restricting the widespread use of ICP blockade.^{35,36} ICPs not only affect cross-talk between the immune system and a tumor, acting as a gatekeeper toward anti-cancer immunity, they also function within the immune system, serving as a vital mechanism to maintain immunological homeostasis.³⁵ Consequently, the toxicity of ICP-targeting drugs differs from that of conventional chemotherapies, targeted small molecule inhibitors, or even traditional therapeutic monoclonal antibodies.³⁶ Non-specific activation of immune responses via ICP blockade can lead to immune-related adverse events (irAEs).^{36–40} The incidence of all grades of irAE is reported to range from 15 to 90%, and the frequency of severe irAEs requiring immunosuppression and withdrawal from immunotherapy is estimated to be between 0.5 and 13%.⁴¹ Disordered infiltration of immune cells in normal skin, and gastrointestinal, hepatic, thyroid, renal, pulmonary, musculoskeletal, and pituitary tissues has been reported in cancer patients receiving ICP-targeted therapies.^{42,43} These irAEs can lead to treatment interruption and even multiple organ failure. Unfortunately, the pathophysiology of irAEs resulting from ICP blockade is not yet fully understood. Even using dosage-decreasing countermeasures, complete prevention of such toxicity

is unachievable in the short-term, which represents a significant challenge to ICP-centric immunotherapy. Thus, ICP-targeting inhibition should be precisely controlled to avoid potentially severe autoimmune disorders or infectious diseases in clinical practice.

MULTIPLE IMMUNOSUPPRESSIVE TUMOR MICROENVIRONMENTS DOMINATE CANCER IMMUNOTHERAPEUTIC EFFICACY

As described earlier, in addition to ICPs, TIME largely determines the therapeutic efficacy of cancer immunological treatments. Several hallmarks of immunosuppressive tumor microenvironment and their influence on current cancer immunotherapy can be summarized as follows (Fig. 1).

Heterogeneity of constitution

It has been demonstrated that a variety of cells are recruited to the TIME during the development of a tumor. The composition of the heterogeneous TIME is extremely complex, containing a variety of immunosuppressive cells, including tumor cells, cancer-associated fibroblasts (CAFs), vascular endothelial cells, suppressive myeloid cells, regulatory T (Treg) cells, and regulatory B cells (Fig. 2). Each cell type in a suppressive TIME contributes to its promotion and maintenance. The immunoregulatory potential of stromal cells has recently received increased attention. These cells have been demonstrated to suppress the immune system by inhibiting the trafficking and function of T cells by both direct and indirect mechanisms.⁴⁴ Furthermore, as will be discussed, the molecular deregulation in endothelial cells also plays a critical role in the inhibition of T-cell trafficking and induction of T-cell apoptosis. Myeloid subsets, including tumor-associated macrophages, monocytes and granulocytes, constitute the heterogeneous components of the TIME and have strong immunosuppressive potential.⁴⁵ These cells inhibit the antitumor activity of T cells and natural killer (NK) cells using a variety of mechanisms, leading to resistance to immunotherapy.^{46,47} Mounting evidence demonstrates that the recruitment and activation of myeloid subsets are associated with tumor progression, recurrence, and negative clinical outcome. Treg cells play a critical role in the maintenance of immune homeostasis by inhibiting abnormal/excessive immune responses. However, previous studies have demonstrated that Treg cells promote tumor development and progression by inhibiting antitumor immunity. The underlying suppressive mechanisms include: inhibition of costimulatory signals mediated via CD80 and CD86 expressed by dendritic cells, secretion of inhibitory cytokines, metabolic modulation of tryptophan and adenosine, and direct killing of effector T cells.⁴⁸ Regulatory B cells were also found to be involved in the development and maintenance of immunological tolerance by producing chemokines such as IL-10, IL-35, and transforming

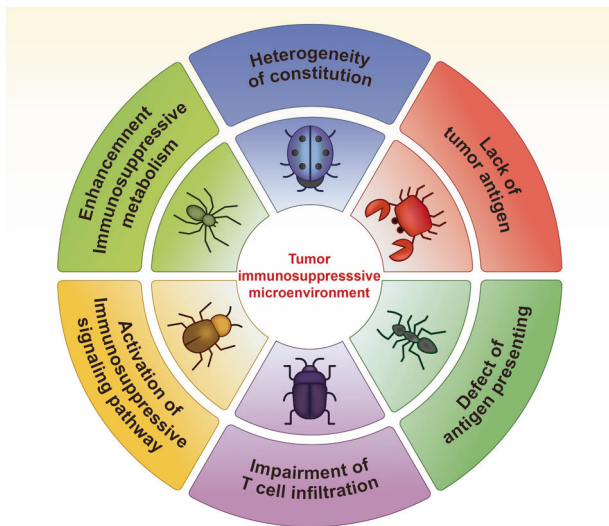


Fig. 1 Hallmarks of an immunosuppressive tumor microenvironment. Six hallmarks, including heterogeneity of constitution, lack of tumor antigen, defect of antigen-presenting cell, impairment of T-cell infiltration, activation of an immunosuppressive signaling pathway, and enhancement of immunosuppressive metabolism co-contribute to an immunosuppressive tumor microenvironment

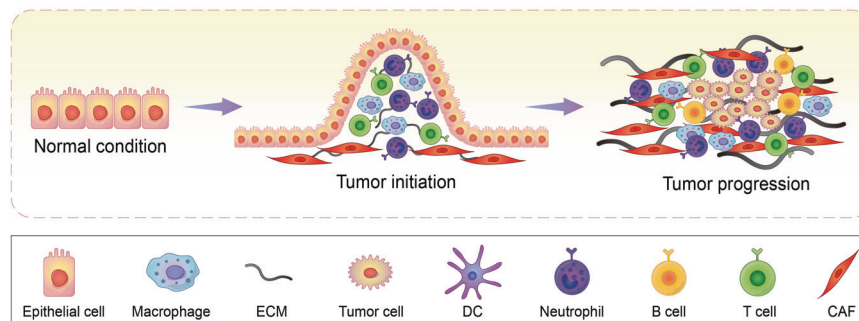


Fig. 2 Construction of TIME. During tumorigenesis and progression, a variety of cells, including but not limited to macrophage, DC, neutrophil, B cell, T cell, and CAF, are recruited to the surrounding microenvironment of tumor cells, co-constituting the TIME together with the ECM in addition to other elements

growth factor β (TGF β). Considering the heterogeneity of the TIME, application of ICP inhibitors is perhaps not sufficient to maximize the benefit of immunotherapy, and the use of tumor biomarkers involved in the maintenance of an immunosuppressive microenvironment should also be considered to achieve better outcomes and safety. In a proportion of patients at least, the observed response of ICP inhibitors may result from the capacity of these therapies to simultaneously reshape the TIME. However, rather than identifying immunotherapies as ineffective, the observed resistance may indicate that both the influence and stimulation of factors in the TIME cannot meet the minimum requirements for reinvigorating the immune system. Therefore, it is timely to incorporate ICP inhibitors into more effective combination therapies.

Lack of tumor antigen

There are three principal categories of tumor antigen: tumor-specific antigens, tumor germline antigens and tumor-associated antigens. For the majority of malignancies without viral etiology, tumor-specific antigens are formed solely by tumor-specific gene mutations. Cancer germline antigens are expressed in tumor tissues but silent in most normal tissues except in trophoblastic and male germline cells. Tumor-associated antigens are normally expressed at low levels in normal tissues, but at high levels in tumor cells. These antigens are important for the differentiation of cancer cells from normal cells by the immune system. However, compared with the non-mutated self-antigens with incomplete T-cell tolerance, mutated neoantigens are believed to be significantly more relevant to antitumor immune function. Tumor mutational load is used to quantify the number of mutations per coding region of the tumor genome. It is reasonable to believe that tumors with a high mutational load tend to express a greater number of tumor-specific antigens. Previous studies have shown that a high tumor mutational load is associated with a favorable immune response in patients who received ICP therapy. By analyzing the mutation profiles of 336 patients who received ICP blockade therapy, Chen et al. demonstrated that high neoantigen quality was associated with prolonged survival when receiving immunotherapy (log-rank test, $P = 0.009$).⁴⁹ Eliezer et al. reported that nonsynonymous mutational load was significantly associated with the clinical benefit of ipilimumab therapy for melanoma ($P = 0.0076$; Mann-Whitney test).⁵⁰ In patients with NSCLC, Rizvi reported that patients with a low nonsynonymous mutation burden suffered a lower objective response rate and shorter progression-free survival.⁵¹ These observations confirmed the hypothesis that neoantigens, caused by nonsynonymous mutations, are critical for the tumor response to ICP therapy. However, a previous report indicated that cancer cells develop particular mechanisms to avoid being eliminated after recognition by the immune system, which is termed immune cancer immunoediting. These mechanisms include reducing the expression of the most immunogenic antigen and loss of the mutation that results in an immunogenic neoantigen.⁵² In tumors with a low mutational load, the lack of sufficient neoantigens could lead to a state of low immunogenicity, which would eventually result in T-cell exclusion. In addition, cancer antigens can undergo direct modification such as glycosylation or cleavage by extracellular matrix metalloproteinases to avoid recognition by the immune system.^{53–56} These events can cause both primary and acquired resistance to ICP therapy in different cancers, ultimately resulting in unsuccessful treatment.

Defect of antigen-presenting cell

While direct presentation of antigens by tumor cells in the context of MHC-I molecules plays an important role in the activation of an antitumor immune response, cross-presentation by professional antigen-presenting cells (APCs), especially dendritic cells (DCs), is the foundation of the "cancer immunity cycle." DCs have been

identified as remarkably capable cytotoxic T-cell stimulators that prolong the survival of cancer patients.^{57,58} Roberts et al.⁵⁹ reported that CD103⁺ DCs are the dominant cell type responsible for tumor antigen cross-presentation. All such effects require CCR7 and high CCR7 expression levels in melanoma were found to be significantly related to T-cell infiltration and better clinical outcomes in patients. Spranger et al.⁶⁰ investigated the underlying mechanism of immune resistance in tumors using a tumor model resembling cold tumors (lack of tumor T-cell infiltration) in humans. Their results indicate that tumor infiltrating CD103⁺ DCs played an important role in T-cell trafficking by producing C-X-C motif chemokine ligand 9/10 (CXCL9/10). However, the tumor-mediated suppressive microenvironment modulates DCs and suppresses their ability through a variety of mechanisms that eventually lead to tumor immune escape. A variety of TIME factors have demonstrated to negatively impact DCs.⁶¹ Tumor-derived interleukin-6 (IL-6) and macrophage colony-stimulating factor were found to be responsible for switching the differentiation of CD34⁺ progenitors from DCs to monocytes, which lack APC function.⁶² Tumor-derived IL-10 has also been shown to be responsible for DC dysfunction by inhibition of DC maturation that impairs their antigen presentation capacity.⁶³ Other factors, including matrix metalloproteinase 2 and thymic stromal lymphopoietin were found to skew T-cell differentiation by modulating DC function.^{64,65} The β -catenin signaling pathway has also been shown to be responsible for DC dysfunction. The tumor-derived Wnt5a ligand significantly increases the expression and activity of indoleamine 2,3-dioxygenase-1 (IDO1) in DCs via the β -catenin pathway, leading to promotion of Treg differentiation.⁶⁶ Hong et al.⁶⁷ reported that DC-specific deletion of β -catenin in mice markedly enhanced antitumor immune response and delayed tumor growth. Considering all these mechanisms may contribute to primary and acquired resistance to immunotherapy as insufficient antigen presentation may lead to T-cell anergy and restriction of antitumor immunity, it is logical to combine DC-therapy and ICBs to achieve synergistic effects and improve the clinical response.

Impairment of T-cell infiltration

Tumor infiltrating CD8⁺ T cells play a critical role in the response to immunotherapy. It was hypothesized that the activity of ICP therapy relied mostly on pre-existing CD8⁺ T-cell infiltration.⁶⁸ For example, Tumeh et al.⁶⁹ investigated 46 patients with advanced melanoma who received anti-PD-1 therapy. Pretreatment samples obtained from the patients displayed a higher CD8⁺ cell density at the invasive tumor margin in patients who experienced a tumor response. In an investigation of anti-PD-1/ anti-PD-L1 therapy in 32 patients with melanoma, Eroglu et al.²³ reported a higher baseline T-cell density in patients with prolonged survival ($P = 0.002$). However, T-cell infiltration of tumors can be inhibited by a variety of immunosuppressive mechanisms. Firstly, T-cell trafficking can be influenced by the heterogeneity of perfusion and oxygen levels across the regions of the tumor caused by abnormalities in tumor neovasculature. In addition, the adhesion process can also be modulated in tumors to exclude antitumor T cells. The downregulation of intercellular adhesion molecule 1/2, vascular cell adhesion molecule 1 and overexpression of the endothelin B receptor on endothelial cells were also shown to be associated with the absence of infiltrating T cells.^{70–72} In ovarian cancer, silencing of CXCL9 and CXCL10 expression in tumor cells via an epigenetic mechanism inhibited T-cell infiltration.⁷³ Furthermore, further evidence of the involvement of pro-inflammatory chemokines in the inhibition of T-cell infiltration was provided by the observation that intratumoral reactive nitrogen species produced by suppressive myeloid cells were able to induce CCL2 chemokine nitration and hinder T-cell migration and infiltration. Moreover, tumors rely on other components for T-cell exhaustion. For example, the tumor stroma,

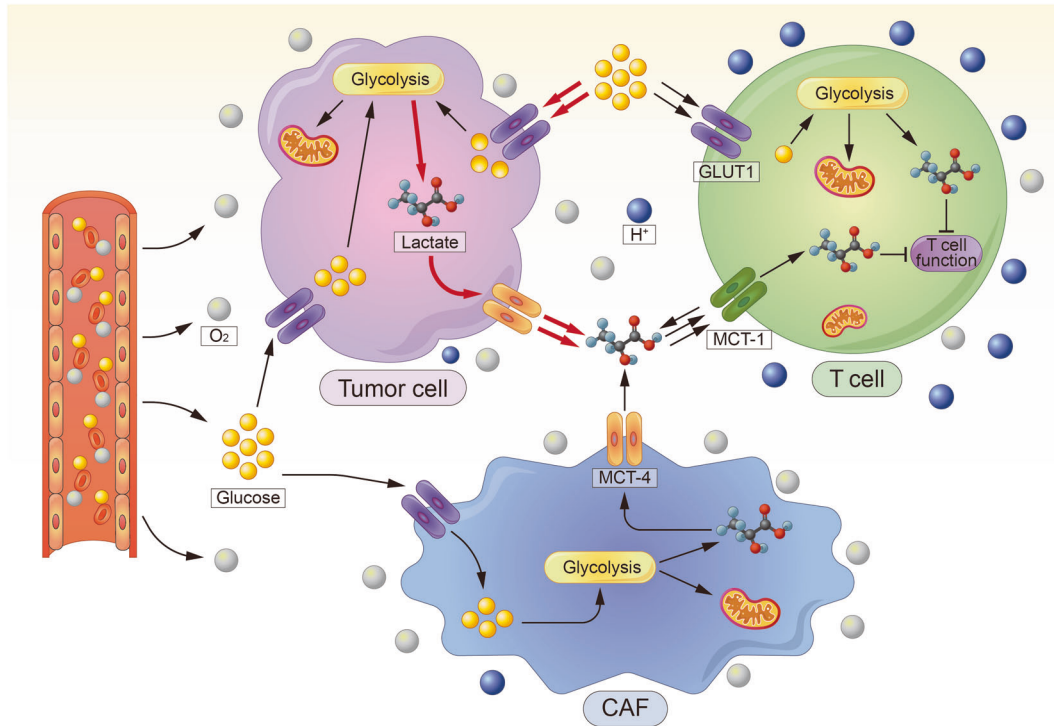


Fig. 3 Metabolic regulation of tumor microenvironment for T-cell energy. The high rate of aerobic glycolysis in tumor cells and CAFs deprives immune cells of nutrients that are critical for their physiological function, meanwhile causing increased lactate production, which leads to tumor microenvironment acidification and immunosuppression

including CAFs, can suppress T-cell activation and inhibit T-cell infiltration. Furthermore, an *in vivo* model indicated that the reduction of collagen enhanced T-cell infiltration, suggesting that the density of extracellular matrix is associated with the ability of T cells to migrate.⁷⁴

Activation of immunosuppressive signaling pathway

Tumor cells are associated with molecular alterations, including, but not limited to, mutations of Kirsten rat sarcoma viral oncogene (Kras), focal adhesion kinase (FAK), and Janus kinase 1/2 (JAK1/2), which directly influence the TIME and immune function. As a signature event of tumor development, Kras mutations are common in a variety of malignancies and play an important role in the development and maintenance of the TIME, in addition to controlling tumor metabolism.⁷⁵ Tumor cells with Kras mutations *in vivo* were found to induce granulocyte-monocyte colony-stimulating factor, promoting the accumulation of suppressive myeloid cells and Treg cells, leading to T-cell exhaustion.⁷⁶ In a Kras-driven mouse model, Kras^{G12D} upregulated Hedgehog signaling and activated the inflammatory pathway in autochthonous pancreatic tumors, which promoted the development and maintenance of a fibroinflammatory stroma resulting in T-cell exhaustion.⁷⁷ In addition, FAK was also identified as a critical regulator of the TIME. In squamous cell carcinoma, nuclear FAK promotes tumor growth and T-cell exhaustion by inducing CCL5 to recruit Treg cells.⁷⁸ FAK has also been shown to negatively regulate T-cell receptor-mediated signaling by influencing the recruitment of C-terminal Src kinase members following TCR activation in T cells.⁷⁹ Preclinical data have shown that the FAK inhibitor VS-4718 reduced tumor fibrosis, decreased the number of myeloid-derived suppressor cells and prolonged survival in a mouse model.⁸⁰ Moreover, when experiencing immune attack, cytotoxic T lymphocytes release interferon gamma (IFN γ) into the TIME, which further activates signal transducers and activators of transcription-related signaling pathways in cancer cells, in turn upregulating PD-L1 expression that suppresses the immune

attack.^{81–84} Acquired PD-1 blockade resistance in melanoma was found to correlate with JAK1 and JAK2 loss-of-function mutations. Such mutations blocked IFN γ signaling, resulting in insensitivity to its antiproliferative effects on cancer cells.⁸⁵ These altered signaling pathways play a critical role in maintaining an immunosuppressive microenvironment, presenting a major obstacle for cancer immunotherapy.

Enhancement of immunosuppressive metabolism

The desmoplastic response and elevated energy production rate of tumors create a hypoxic and low-nutrient extracellular environment, which is unfavorable for the survival of both tumor cells and immune cells. However, compared with immune cells, tumor cells have extraordinary metabolic plasticity, which facilitates their adaptation to and survival in harsh conditions, further depriving immune cells of nutrients critical for proliferation and function (Fig. 3). It has been demonstrated that metabolic alterations play an important role in the maintenance of an immunosuppressive environment.⁸⁶ Glucose is a predominant fuel source in proliferating cells. The Warburg effect, which represents the metabolic switch from cellular respiration to anaerobic glycolysis, is a hallmark of tumor metabolism. Previous studies have shown that tumors undergo metabolic reprogramming to compete for this vital, but limited nutrient source. The hypoxic conditions and oncogenic molecules in tumor cells cause upregulation of the expression of the receptor for glucose internalization, GLUT1, in addition to other genes of metabolism.^{87,88} As a result, tumors undergoing immune reprogramming with increased import-receptor expression outcompete immune cells for glucose. Previous studies have shown that GLUT1 overexpression was associated with T-cell exhaustion in a variety of malignancies.^{89,90} T cells also undergo metabolic switching to adapt to conditions of limited glucose availability. Interestingly, while GLUT1 deficiency was found to impair effector T-cell expansion and function, Treg cells, in contrast, appeared functionally unaffected *in vivo*.⁹¹ However, GLUT1 deficiency

impairs the antitumor response of CD8⁺ T cells. GLUT1-lo T cells exhibited decreased effector phenotype acquisition, reduced proliferation, and impaired infiltration within both hypoxic and normoxic conditions.⁹² High rates of aerobic glycolysis also cause increased lactate production, which leads to tumor microenvironment acidification. Lactate production is associated with metastasis, angiogenesis and immunosuppression. Excessive lactate induces NK cell apoptosis by decreasing the intracellular pH, resulting in NK cell depletion in colorectal liver metastasis.⁹³ Lactic acid also suppresses the proliferation of CTLs and impairs their cytokine production capability, which is recovered in lactic acid-free medium.⁹⁴ The growth of tumors with reduced lactate production is substantially slower than that of control tumors and is accompanied by increased infiltration of IFN γ -producing T and NK cells in vivo.⁹⁵ Elevated catabolism of the amino acids tryptophan and arginine is an additional hallmark of the TIME in a variety of malignancies.⁹⁶ IDO, tryptophan 2,3-dioxygenase (TDO) and arginase play essential roles in tryptophan and arginine catabolism and regulate T-cell immunity in an inflamed TIME.^{97–100} The metabolism of tryptophan and arginine impairs effector T-cell function and promotes the production of Tregs cells, suppressing immunity in the TIME.^{101–103}

COMBINED TIME-TARGETED THERAPY AND ICP INHIBITOR TREATMENT

There is increasing evidence that demonstrates that the TIME plays a critical role in tumor immune surveillance and immunological evasion.^{13–15} Of the many multiple factors that contribute to anti-cancer immunity, ICPs are just one weapon utilized by tumors to counter attacks from the immune system.¹⁶ In contrast, as the battlefield on which the tumor and immune system meet, the TIME has an inestimable influence on the final outcome of cancer immunotherapy. Therefore, combined ICP inhibitors (ICIs) and TIME-targeting therapies is a logical strategy to maximize stimulation of an antitumor immune response (Fig. 4).

Neoantigen-based therapy

Accumulating evidence demonstrates that mutational burden is associated with enhanced antitumor immune response. Therefore, oncologists have attempted to stimulate a neoantigen-specific T-cell response using a variety of approaches. Previous studies have shown that vaccination with a neoantigen incorporating mutant epitopes identified through genomics and bioinformatics induces tumor rejection in a mouse model, providing a theoretical foundation for further neoantigen-based treatment strategies.^{104–106} In general,

there are three principal strategies for neoantigen-based therapy. In the first treatment strategy, after identification through genomic sequencing, the neo-peptide most likely to induce the strongest immune response is delivered to patients with or without optimal immune adjuvants.^{107,108} In glioblastoma, the immunogenic antigen was reported to elicit a sustained central memory T-cell response and increased effector T-cell infiltration.^{108,109} Furthermore, complete tumor regression was achieved in melanoma patients through the combination of neoantigen-based therapy with ICI.¹¹⁰ The second treatment strategy uses an messenger RNA (mRNA) vaccine. While completely avoiding any possible unwanted modification of patient cells, the mRNA demonstrated satisfactory treatment outcomes in melanoma.¹¹¹ When combined with ICI, a third of patients mounted a complete response after vaccination, resulting in sustained progression-free survival.¹¹¹ The third neoantigen-based therapy focuses on DCs. Firstly, DCs are extracted from the patient and co-cubated with personalized neo-peptides and the corresponding cytokines. The activated DCs are then expanded in vitro and injected back into the patient. The first-generation dendritic vaccination without in vitro stimulation resulted in poor clinical outcomes, with a 3% tumor response rate.¹¹² The second-generation dendritic vaccination, which included additional maturation of the DCs in vitro, resulted in an increased response rate of 8–15%.¹¹² In 2010, the FDA approved Sipuleucel-T as the sole DC-vaccination therapy for prostate cancer.^{113–115} In a multicenter phase III trial, Sipuleucel-T treatment resulted in a 4.1-month improvement in the median survival in metastatic castration-resistant prostate cancer.^{113,116} The preclinical data also demonstrated that the DC-vaccination therapy combined with ICIs improved CD8⁺ T-cell infiltration of the tumor and survival in vivo.^{117–119} In addition, a retrospective study indicated that in stage III melanoma patients, a considerable number of those who experienced disease progression after DC-vaccination therapy responded to CTLA-4-targeting by use of ipilimumab.¹²⁰ In a phase II study, the response rate was 38% in stage III/IV melanoma patients following administration of ipilimumab combined with DC-vaccination therapy.¹²¹ These results suggest that the combination of ICIs with DC-vaccination therapy has a promising future.

Immunogenic cell death induction

Over the past 10 years, mounting evidence has suggested that inducing cancer cell death to activate the immune system is an effective method of anti-cancer immunotherapy.^{122–124} It is well-known that different stimuli activate multiple pathways of cancer cell death, such as apoptosis, necroptosis, autophagy, ferroptosis, and pyroptotic cell death.^{125–127} From an

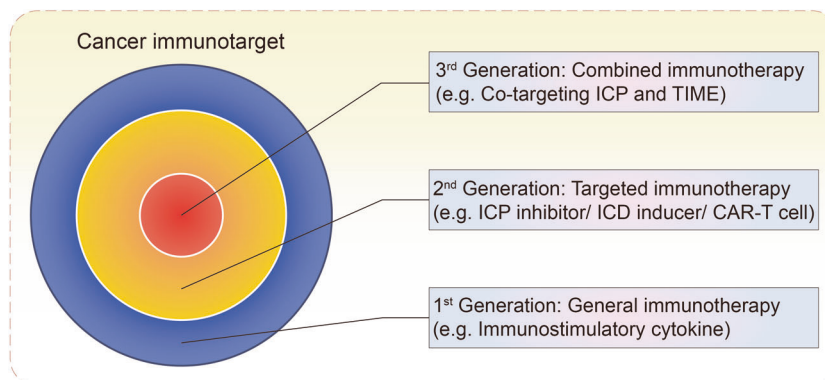


Fig. 4 Development and progression of cancer immunotherapeutic strategies. The first-generation of cancer immunotherapy, including but not limited to immunostimulatory cytokines, aimed to generally activate the immune system, so as to promote a concomitant antitumor response. The second-generation of cancer immunotherapy, including but not limited to ICP inhibitors, ICD inducers and CAR-T cells, aimed to block specific immunosuppressive molecules, induce specific cellular processes, or target-specific tumor cells, so as to cause a relatively manageable antitumor response. The third generation of cancer immunotherapy, including but not limited to the co-targeting of ICP and TIME, aimed to jointly inhibit multiple aspects of negative immune regulation, so as to mount an effective and safe antitumor response

immunological perspective, immunogenic cell death (ICD) is the cause of an adaptive immune response elicited by cell-associated antigens released from dead cells.^{122,126,128} It has been verified that the molecular properties of ICD largely overlap with TIME regulators. Exposure of calreticulin (CALR, an “eat me” signal), secretion of adenosine triphosphate (ATP, a “come to me” signal), release of high mobility group box 1 (HMGB1, an “activate you” signal), autocrine production of type I interferon (IFN I, a “stimulate you” signal), and export of annexin A1 (a “find me” signal) from dying cancer cells have been identified as the five key hallmarks of the process of ICD.¹²⁹ Following the initiation of ICD, secreted ATP favors the recruitment and activation of APCs by P2RY2 and P2RX7.¹³⁰ Exported annexin A1 then guides the homing and juxtaposition of APCs to the dying cells by FPR1.¹³¹ Subsequently, exposed CALR promotes the engulfment of dying cells and antigen uptake by LRP1.¹³² Furthermore, released HMGB1 stimulates the synthesis of pro-inflammatory factors, maturation of APCs and presentation of tumor antigens by TLR4.¹³³ Finally, autonomous IFN I increases secretion of CXCL10 and recruitment of T cells to exert antitumor effects.^{134,135} Of note, such hallmarks of ICD can be triggered by multiple cellular stress conditions, including ER stress-induced CALR exposure, autophagy-induced ATP secretion, secondary necrosis-engendered HMGB1 and annexin A1 release, and stimulation of autonomous IFN I production by infectious pathogens.^{130,135–141} Hence, widely applicable inducers of ER stress, autophagy, necroptosis or viral mimicry are now employed as activators of ICD.^{142–149}

Increasing preclinical and clinical evidence has revealed that a conventional chemotherapy-induced immune response is principally dependent on the induction of ICD.^{142,143,150,151} Indeed, pharmacological or genetic suppression of ICD effectors greatly diminishes the curative effects of anthracycline-based immunogenic chemotherapy.^{133,134,152–157} The core phenotypes and mechanisms of immunogenic chemotherapy are highly consistent, at least in anthracycline-treated breast cancer, oxaliplatin-treated colorectal cancer, bortezomib-treated multiple myeloma, and imatinib-treated gastrointestinal stromal cancer, in spite of slight differences in tissue-specificity or drug-precise pharmacological action.^{131,158–162} However, since there are also considerable shortcomings associated with the induction of ICD for cancer therapy, the combination of ICD inducers and ICP-targeting drugs may be an optimal counterplan to assist cancer patients in the future.^{4,144,163–165} For instance, ICD is triggered in combination with a number of undesirable immunosuppressive effects, particularly in anthracycline-based immunogenic chemotherapy,¹⁶⁶ while bona fide immune interventions can, in certain circumstances, improve treatment efficacy to some extent. In addition, to neutralize the immunosuppressive effects and maximize the immunostimulatory function of anti-cancer drugs, the chemotherapeutic drug gemcitabine has been combined with ipilimumab in preclinical models,¹⁶⁷ and the BRAF inhibitor dabrafenib and the MEK inhibitor trametinib have also been used in combination with various ICP-targeting agents in experimental studies.¹⁶⁸ More excitingly, the CDK inhibitor dinaciclib has recently been confirmed to induce ICD and enhance anti-PD-1-mediated tumor suppression in an immunocompetent mouse model.¹⁶⁹ Furthermore, local chemotherapy synergized with CTLA-4 inhibition has been shown to boost an immune response in mice and patients with advanced melanoma.¹⁷⁰ Several clinical trials have been launched to evaluate the clinical profile of the synergistic response of combination therapy with ICD inducers and ICP blockers (Table 1). This strategy can, at least in principle, mediate direct destruction of a fraction of cancer cells, while stimulating short-term immune clearance of the remainder, while also maintaining long-lasting immune memory to prevent disease recurrence.

Oncolytic viruses

Over recent years, oncolytic viruses (OVs) have attracted significant attention as a promising antitumor therapy based on their capacity for preferential replication in tumor cells, causing lysis and thus transforming a cold immunosuppressive tumor into one which is inflamed.^{171,172} OVs promote an antitumor immune response via a variety of mechanisms. Firstly, direct killing of tumoral cells through activation of different cytotoxic programs, including apoptosis, autophagy, necroptosis, and pyroptosis leads to dissemination of a wide repertoire of both progeny virions and cellular tumor-associated antigens/neoantigens into the micro-environment.^{171–173} In addition, lysed tumor cells disseminate additional danger-associated molecular patterns and viral pathogen-associated molecular patterns (PAMPs), which induce an inflammatory immune response.^{171–173} The PAMPs consist of viral RNA, DNA, or proteins that are sensed by pattern recognition receptors expressed by DCs. As a result of pattern recognition receptor engagement, activated DCs produce cytokines that are pro-inflammatory (e.g., TNF- α and IL-12) and antiviral (IFN I: IFN- α and IFN- β), all of which contribute to tumor antigen cross-presentation and cytotoxic T-cell priming.^{171–173} Furthermore, OV-mediated cancer cell death is characterized by the exposure and/or release of danger-associated molecular patterns, including ATP, HMGB1, and CALR, which represent the classical hallmarks of ICD.^{171–174} Last but not least, the sensing of PAMPs by tumor cells triggers an IFN I response, which eventually promotes both NK cell and cytotoxic T-cell antitumor responses.^{172,173,175} In 2015, T-VEC was approved by the FDA as the first oncolytic virus for advanced melanoma therapy.¹⁷⁶ In a phase III randomized clinical trial (OPTiM) conducted in 436 patients with stage IIIB to IV melanoma, the response rate was significantly higher in those with T-VEC than subcutaneous administration of granulocyte-macrophage colony-stimulating factor alone, demonstrating the capability of T-VEC to boost an antitumor immune response.¹⁷⁷ Based on these results, a clinical trial combining T-VEC and ipilimumab was conducted in 198 patients with advanced melanoma.¹⁷⁸ This approach resulted in a significantly increased response rate and prolonged survival compared with the administration of ipilimumab alone.¹⁷⁸ The combination of ICDs and OVs represents a rational design methodology for immunotherapy. As immunologically “cold” tumors with low mutational burden and inhibited immune cell infiltration may not respond to ICDs, direct oncolysis mediated by armed virotherapy will generate tumor antigens, danger-associated molecular patterns, and PAMPs to prime a T-cell response and reshape the TIME. Thus, this approach has the potential to overcome the primary or adaptive resistance to ICD monotherapies experienced in the clinic (Table 1).

Cytokine therapy

Cytokines released by various cell types in the TIME in response to cellular stress conditions play a critical role in modulating the influx and expansion of leukocytes. The secreted cytokines enable the rapid propagation of immune signaling in a complex yet efficient manner, and thus can generate a potent and coordinated immune response to target antigens.¹⁷⁹ The growing interest in harnessing cytokines in the TIME to boost antitumor immunity has been accompanied by intensified efforts to characterize cytokines and exploit their vast signaling networks to develop cancer treatments.^{179,180} As a result, numerous clinical trials have been conducted to investigate the potential antitumor activity of a number of recombinant cytokines. IL-2 was approved as the first immunotherapy for patients with advanced renal cell carcinoma and metastatic melanoma,¹⁸¹ followed by the approval of IFN- α for renal cell leukemia, non-Hodgkin lymphoma and melanoma.^{179,180} However, these cytokine strategies failed to live up to expectations raised by the results obtained in preclinical models, with clinical investigations revealing the narrow therapeutic windows and modest antitumor efficacy of such

Table 1. Clinical trials of TIME and ICP co-targeted combination therapies in multiple cancers

TIME-targeting therapy	Effect	Combined ICP inhibitor	Indication	N	Response	Clinical trial	Status
T-VEC	OV	Ipilimumab	Melanoma	198	ORR 39% (T-VEC + Ipi) vs. 18% (Ipi), $P = 0.002$	NCT01740297	Active, not recruiting
T-VEC	OV	Pembrolizumab	Melanoma	21	ORR 48%	NCT02263508	Active, not recruiting
T-VEC	OV	Pembrolizumab	HNSCC	36	ORR 15.6%; disease control rate 40.6%	NCT02626000	Active, not recruiting
HF10	OV	Ipilimumab	Melanoma	46	BORR at 24 weeks 41%; median PFS 19 m; median OS 21.8 m	NCT02272855	Completed
HF10	OV	Nivolumab	Melanoma	7	Major pathological response 0%	NCT03259425	Active, not recruiting
Epacadostat	IDO1 inhibitor	Pembrolizumab	Gastric cancer and esophageal cancer	3	6-month survival rate 33.3%	NCT03196232	Completed
Epacadostat	IDO1 inhibitor	Pembrolizumab	Head and Neck cancer	54	ORR 31.4% (Epa + Pem) vs. 21.1% (Pem)	NCT03358472	Active, not recruiting
Epacadostat	IDO1 inhibitor	Pembrolizumab	Lung cancer	154	ORR 32.5% (Epa + Pem) vs. 39% (Pem)	NCT03322540	Active, not recruiting
Epacadostat	IDO1 inhibitor	Pembrolizumab	RCC	129	ORR 31.3% (Epa + Pem) vs. 29.2% (SoC)	NCT03260894	Active, not recruiting
Epacadostat/platinum-based chemotherapy	IDO1 inhibitor/chemotherapy	Pembrolizumab	Lung cancer	223	ORR 26.4% (Epa + Pem + Chemo) vs. 44.8% (Pem + Chemo)	NCT03322566	Active, not recruiting
Azacitidine/epacadostat	DNA methyltransferase inhibitor/IDO1 inhibitor	Pembrolizumab	Advanced malignancies	70	5.7% ORR	NCT02959437	Completed
Axitinib	VEGFR inhibitor	Pembrolizumab	RCC	861	median PFS 15.1 m (Axi + Pem) vs. 11.0 m (Sunitinib), $P = 0.00012$; ORR 59.3% (Axi + Pem) vs. 35.7% (Sunitinib), $P < 0.0001$	NCT02853331	Active, not recruiting
Bevacizumab	VEGFR inhibitor	Atezolizumab	RCC	915	median PFS 11.2 m (Bev + Ate) vs. 7.5 m (Sunitinib), $P = 0.0205$	NCT02420821	Active, not recruiting
Bevacizumab/capecitabine	VEGFR inhibitor	Atezolizumab	CRC	133	median PFS 4.37 m (Bev + Ate + Cap) vs. 3.32 m (Bev + Cap), $P = 0.051$; median OS 10.55 m (Bev + Ate + Cap) vs. 10.61 m (Bev + Cap), $P = 0.40$	NCT02873195	Active, not recruiting
Bevacizumab	VEGF inhibitor	Atezolizumab	HCC	356	median PFS 6.8 m (Bev + Ate) and 4.3 m (Sunitinib), $P < 0.001$; 1-year survival rate 67.2% (Bev + Ate) vs. 54.6% (Sunitinib)	NCT03434379	Active, not recruiting
Bevacizumab/carboplatin + paclitaxel	VEGF inhibitor/chemotherapy	Atezolizumab	NSCLC	692	median PFS 8.3 m (Bev + Chemo + Ate) vs. 6.8 m (Chemo + Bve), $P < 0.001$; median OS 19.2 m (Bev + Chemo + Ate) vs. 14.7 m (Chemo + Bve), $P = 0.02$	NCT02366143	Active, not recruiting
Carboplatin/nab-paclitaxel/pemetrexed	Chemotherapy	Atezolizumab	NSCLC	723	median PFS 7.0 m (Ate + Nab + Pab + Car) vs. 5.5 m (Nab + Pab + Car), $P < 0.001$; median OS 18.6 m (Ate + Nab + Pab + Car) vs. 13.9 m (Nab + Pab + Car), $P < 0.001$	NCT02367781	Active, not recruiting
Nab-paclitaxel	Chemotherapy	Atezolizumab	Triple-negative breast cancer	900	ITT median OS 21.0 m (Ate + Chemo) vs. 18.7 m (Chemo), $P = 0.078$	NCT02425891	Active, not recruiting

Table 1. continued

TIME-targeting therapy	Effect	Combined ICP inhibitor	Indication	N	Response	Clinical trial	Status
Cisplatin/carboplatin/pemetrexed	Chemotherapy	Pembrolizumab	NSCLC	616	median PFS 8.8 m (Pem + Chemo) vs. 4.9 m (Chemo), $P < 0.00001$; ORR 47.6% vs. 18.9%, $P < 0.0001$	NCT02578680	Active, not recruiting
Carboplatin/etoposide	Chemotherapy	Atezolizumab	NSCLC	403	median PFS 5.2 m (Ate + Chemo) vs. 4.3 m (Chemo), $P = 0.0170$; 12.3 m (Ate + Chemo) vs. 10.3 m (Chemo), $P = 0.0069$	NCT02763579	Active, not recruiting
Carboplatin/nab-paclitaxel/pemetrexed	Chemotherapy	Pembrolizumab	NSCLC	559	median PFS 6.4 m (Pem + Chemo) vs. 4.8 m (Chemo), $P < 0.0001$; OS 15.9 m (Pem + Chemo) vs. 11.3 m (Chemo), $P = 0.0008$; ORR 57.9% (Pem + Chemo) vs. 38.4% (Chemo)	NCT02775435	Active, not recruiting
NKTR-214	IL-2 therapy	Nivolumab/Ipilimumab			Melanoma, NSCLC	38	ORR 59.5%; DCR 83.8%
NCT02983045	Active, not recruiting	/					
M7824	Bifunctional fusion protein composed of a mAb against PD-L1 fused to a TGF β		Solid Tumors	19	ORR 15.7%	NCT02517398	Active, not recruiting

HNSCC Head and neck squamous cell carcinoma, OV oncolytic virus, ORR objective response rate, DCR disease control rate, RCC renal cell carcinoma, SoC stand of care, PFS progression-free survival, HCC hepatocellular carcinoma, ITT intention-to-treat patients, NSCLC non-small-cell lung cancer, CRC colorectal carcinoma, vs. versus, N patient number

treatments, thus limiting their clinical application as a monotherapy for cancer patients.^{172,174,182} Second-generation, IL-2-based compounds developed with improved pharmacodynamic properties have displayed promising response rates when combined with ICP therapy.^{183,184} In a single-arm, phase I dose-escalation trial, bempegaldesleukin, a CD122-preferential IL-2 pathway agonist, was evaluated in combination with nivolumab in 38 patients with advanced solid tumors (melanoma, renal cell carcinoma, and NSCLC). The total objective response rate was 59.5% (22/37), with seven complete responses (18.9%), in patients with poor prognostic risk factors for response to PD-1/PD-L1 blockade, demonstrating promising therapeutic potential of this novel generation of IL-2 targeted therapy (Table 1).¹⁸⁴

IL-12 is mainly produced by activated antigen-presenting cells bridging the innate and adaptive immune systems. In preclinical models, the combination of IL-12 and chemotherapy eliminated intratumoral Treg cells and induced the appearance of inflammatory myeloid cells in xenograft mouse models.¹⁸⁵ However, in early clinical trials, because of the short half-life of the recombinant protein, high and multiple doses were usually required, which induced dose-related adverse events.¹⁸⁶ In a phase II clinical trial, electroporation of Intratumoral Tavo (plasmid encoding IL-12) was well tolerated and demonstrated strong antitumor activity, which led to a systemic immune response in advanced melanoma patients.¹⁸⁷ Granulocyte-macrophage colony-stimulating factor (GM-CSF) is a cytokine that promotes the expansion and activation of dendritic cells for antigen presentation, and activates T- and B-lymphocyte functions. In phase 3 adjuvant trials for melanoma and lymphoma, systemic administration of GM-CSF demonstrated antitumor effects.¹⁸⁸ However, previous reports have also shown that GM-CSF may have negative effects on an immune response as it may induce accumulation of MDSCs, which promote tumor growth. In a phase III clinical trial, the ipilimumab plus sargramostim (GM-SCF) group achieved superior overall and progression-free survival outcomes than ipilimumab alone in patients with metastatic melanoma.¹⁸⁹ Generally, cytokines are promising and complex TIME targets. The cytokine-based therapy may help overcome the primary and acquired resistance of ICBs and maximize the clinical benefit in a wide range of patients due to its capacity to promote immune cell infiltration and activation of the lymphocyte fraction.

Antiangiogenic therapy

As a hallmark of TIME in a variety of malignancies, the vascular abnormalities of tumors are significantly correlated with immune suppression and tumor cell evasion. Vascular endothelial growth factor (VEGF) and angiopoietin (ANG2) play important roles in regulating tumor angiogenesis. Firstly, VEGF promotes immunosuppression as poor perfusion results in abnormal vascular restricted drug delivery and immune cells infiltration. Moreover, hypoxia and the low pH tumor microenvironment modulate the activity of immune cells. In addition, VEGF and ANG2 can also alter the expression levels of adhesion molecules on endothelial cells that impair the trafficking of immune cells from vessels to TIME.¹⁹⁰ Furthermore, increased VEGF and ANG2 also result in the recruitment and proliferation of immunosuppressive cells, including but not limited to Treg cells, MDSCs, and TAMs.

Antiangiogenic therapy is among the most promising treatments for a variety of malignancies due to its ability to induce durable tumor regression by starving the tumor of blood and nutrient supplies. In addition to its ability to suppress sprouting angiogenesis and delay tumor growth, previous studies have shown that administration of antiangiogenic drugs also leads to tumoral vascular normalization, including upregulation of the leukocyte adhesion molecules (intercellular adhesion molecule 1 and vascular cell adhesion molecule 1), as well as enhancement of blood perfusion and oxygen levels in the TIME. These changes result in increased T-cell infiltration and eventually convert an

Table 2. CAF-reprogrammed effects on immune cells

CAF signal molecules	Immune cell types	Regulatory effects
CXCL12, CAF-S1, OX40L, PD-L2, JAM2	CD4 ⁺ CD25 ⁺ T cells	Recruitment, Treg differentiation
SDF-1, IL-6, CCL5, CCL2, SDF-1	Circulating monocytes	Recruitment, M2-like differentiation
SDF-1, DKK1, MCP-1	Peripheral blood neutrophils	Recruitment, MDSCs differentiation, activation
PGE2	NK cells	Inhibition of NK cytotoxic activity
CXCL12, TGF- β , PD-L1/2, COX-2, FAS-L	T cells	Exclusion, suppression of proliferation and activation
IL-6, DPP4	Helper T cells	Inhibition of Th1, Th17 differentiation

CXCL12 C-X-C motif chemokine ligand 12, *OX40L* oxford 40 ligand, *JAM2* junction adhesion molecule 2, *SDF-1* stromal cell-derived factor 1, *IL-6* interleukin-6, *CCL5* C-C motif chemokine ligand 5, *DKK1* dickkopf WNT signaling pathway inhibitor 1, *MCP-1* monocyte chemoattractant protein 1, *PGE2* prostaglandin E2, *MDSC* myeloid-derived suppressor cell

immunosuppressive microenvironment into one, which is immunosupportive.^{191–193} Therefore, a number of scientists have suggested that the use of ICBs during the window of “vascular normalization” may result in superior clinical outcomes. In a preclinical breast cancer model, targeting the tumor vasculature resulted in a more homogeneous distribution of functional tumor vessels.¹⁹⁴ In addition, administration of a low dose of an antibody targeting VEGFR2 converted tumor-associated macrophages from an immune suppressive M2-like phenotype toward an immune stimulatory M1-like phenotype that can boost CD4⁺ and CD8⁺ T-cell tumor infiltration.¹⁹⁴ Moreover, preclinical data indicated that immunotherapy combined with anti-VEGF antibody resulted in a significant increase in treatment efficacy compared with immunotherapy alone.^{191,195} The results of a phase III trial demonstrated the benefit of such combination treatment for patients with advanced-stage renal cell carcinoma (RCC).¹⁹⁶ In HCC, a phase III trial showed that atezolizumab combined with bevacizumab resulted in better overall and progression-free survival outcomes than sorafenib.¹⁹⁷ In other clinic trials, combining antiangiogenic therapy with ICBs has displayed promising antitumor activity with an acceptable safety profile in patients with gastric cancer, melanoma, and non-small-cell lung cancer (Table 1).^{175,198–201} These results from both preclinical and retrospective clinical studies have demonstrated that vascular normalization induced by targeting the VEGF pathway improved the effectiveness of ICBs. However, over time, a tumor may again switch back to a hypoxic environment and escape from this combination therapy. The underlying mechanism remains incompletely understood and there is still an urgent need to optimize the dosage, duration, and sequence of administration of ICBs and antiangiogenic agents for this combination treatment.

Targeting CAFs and the extracellular matrix

CAF and the extracellular matrix play critical roles in the development and maintenance of an immunosuppressive microenvironment. Firstly, CAFs have been shown to recruit Treg cells, MDSCs and TAMs into tumor environment in varying malignancies, which promote the formation of an immunosuppressive milieu.^{202–204} In addition, accumulating evidence also suggests that CAFs may reprogram infiltrated immune cells toward a tumor-promoting function^{205,206} (Table 2). Moreover, the excessive deposition of collagen due to activation of CAFs may result in

formation of scar-like tissue, especially in pancreatic cancer, which may be utilized by tumor cells as a physical barrier to prevent T-cell infiltration into a tumor.²⁰⁷ Therefore, co-targeting CAFs may improve the efficacy of immunotherapy due to its role in TIME. However, depilation of either FAP⁺ or α -SMA⁺ cell populations has resulted in severe systematic problems in preclinical models, suggesting that these fibroblasts have important physical function as both FAP and α -SMA are not expressed exclusively in CAFs. Therefore, targeting the signaling pathway critical for CAF activation may be more realistic. The TGF β signaling pathway has been shown to play an important role in the proliferation and activation of CAFs and the suppression of CD8⁺ T-cell recruitment to the tumor in addition to inhibition of their function.²⁰⁸ Inhibition of the TGF β signaling pathway in CAFs has been found to result in reduced collagen I secretion, resulting in reduced extracellular matrix stiffness.²⁰⁹ Previous studies have shown that tumor resistance to ICP-targeting therapy was associated with a TGF β signaling signature in fibroblasts.^{208,210} Combining TGF β -blockade with anti-PD-L1 antibodies has reduced TGF β signaling in stromal cells, facilitated T-cell infiltration, and provoked vigorous antitumor immunity and tumor regression in a mouse model.²¹⁰ Fibroblast activation protein-positive CAFs are the primary source of CXCL12 in pancreatic cancer. Combining CXCL12-targeted therapy with anti-PD-L1 immunotherapy was shown to result in a synergistic effect in pancreatic cancer.²¹¹ Effective stromal modulation was also demonstrated by the administration of a polymeric micelle-based nano-formulation encoding liver Hedgehog inhibitor and a chemotherapy drug (M-CPA/PTX). This combination modulated the pancreatic cancer stroma by increasing intratumoral vascular density. When ICP blockade and an anti-PD-1 antibody was included in this combination, it promoted tumor infiltration of cytotoxic CD8⁺ T cells that prolonged survival in a mouse model of pancreatic cancer.²¹² Taken together, CAF has become an attractive target for combination immunotherapy due to its essential role in mediating TIME. However, current targeting therapy seems a double-edged sword as neither these targeted molecules nor cytokines can be exclusively attributed to CAFs. Highly advanced nanoparticle delivering systems or other approaches may help solve these problems, which only the future will reveal.

CONCLUSIONS

In conclusion, TIME regulators are promising cancer immunotherapeutic targets, particularly for solid tumors. Of note, TIME is an interesting but largely unexploited field. So far, there is less clinical evidence for a TIME-targeted approach compared with antibodies against PD-1/PD-L1 or CTLA-4. Many studies of the TIME are based on preclinical mouse models or quite small patient cohorts. Studies of larger patient cohorts have mostly investigated melanoma. In other words, the presented literature does not sufficiently establish that the TIME is the major explanation for the failure of cancer immunotherapy in humans or that new drugs modulating TIME could overcome this limitation. To further solve the complexity of TIME (including the heterogeneity of tumors), investigations across different patient populations and cancer types at both single cellular and molecular levels may provide practicable and precise solutions for wider clinical application, particularly for improvements in the therapeutic efficacy of targeting TIME regulators in addition to its combination with immune checkpoint inhibitors.

ACKNOWLEDGEMENTS

This work was supported by the National Natural Science Foundation of China (81830089 to T.L.; 81871925 and 81672337 to X.B.; 31970696 and 81502975 to X.H.), National Key Research and Development Program (2019YFC1316000 to T.L.), Key Research and Development Program of Zhejiang Province (2020C03117 to X.B.), and

China Postdoctoral Science Foundation (2016T90413 and 2015M581693 to X.H.). The writing of this manuscript was not influenced by the sponsoring foundations.

AUTHOR CONTRIBUTIONS

T.L. and X.H. conceived this review. T.T. wrote the draft, X.H. revised the manuscript, and other authors discussed and commented on the final version. T.T. and X.H. contributed equally to this work. T.L. and X.H. share the senior authorship of this study.

ADDITIONAL INFORMATION

Competing interests: The authors declare no competing interests.

REFERENCES

1. Topalian, S. L. Targeting immune checkpoints in cancer therapy. *JAMA* **318**, 1647–1648 (2017).
2. Topalian, S. L., Drake, C. G. & Pardoll, D. M. Immune checkpoint blockade: a common denominator approach to cancer therapy. *Cancer Cell* **27**, 450–461 (2015).
3. Chen, L. & Han, X. Anti-PD-1/PD-L1 therapy of human cancer: past, present, and future. *J. Clin. Invest.* **125**, 3384–3391 (2015).
4. Sharma, P. & Allison, J. P. The future of immune checkpoint therapy. *Science* **348**, 56–61 (2015).
5. Brahmer, J. R. et al. Safety and activity of anti-PD-L1 antibody in patients with advanced cancer. *N. Engl. J. Med.* **366**, 2455–2465 (2012).
6. Garon, E. B. et al. Pembrolizumab for the treatment of non-small-cell lung cancer. *N. Engl. J. Med.* **372**, 2018–2028 (2015).
7. Le, D. T. et al. Mismatch repair deficiency predicts response of solid tumors to PD-1 blockade. *Science* **357**, 409–413 (2017).
8. Le, D. T. et al. PD-1 blockade in tumors with mismatch-repair deficiency. *N. Engl. J. Med.* **372**, 2509–2520 (2015).
9. Topalian, S. L. et al. Safety, activity, and immune correlates of anti-PD-1 antibody in cancer. *N. Engl. J. Med.* **366**, 2443–2454 (2012).
10. Postow, M. A., Callahan, M. K. & Wolchok, J. D. Immune checkpoint blockade in cancer therapy. *J. Clin. Oncol.* **33**, 1974–1982 (2015).
11. Davoli, T., Uno, H., Wooten, E. C. & Elledge, S. J. Tumor aneuploidy correlates with markers of immune evasion and with reduced response to immunotherapy. *Science* **355**, eaaf8399 (2017).
12. Sharma, P., Hu-Lieskovan, S., Wargo, J. A. & Ribas, A. Primary, adaptive, and acquired resistance to cancer immunotherapy. *Cell* **168**, 707–723 (2017).
13. Binnewies, M. et al. Understanding the tumor immune microenvironment (TIME) for effective therapy. *Nat. Med.* **24**, 541–550 (2018).
14. Nagarsheth, N., Wicha, M. S. & Zou, W. Chemokines in the cancer microenvironment and their relevance in cancer immunotherapy. *Nat. Rev. Immunol.* **17**, 559–572 (2017).
15. Zhang, Y. & Chen, L. Classification of advanced human cancers based on tumor immunity in the microEnvironment (TIME) for cancer immunotherapy. *JAMA Oncol.* **2**, 1403–1404 (2016).
16. Chen, D. S. & Mellman, I. Elements of cancer immunity and the cancer-immune set point. *Nature* **541**, 321–330 (2017).
17. Yao, H. et al. Cancer cell-intrinsic PD-1 and implications in combinatorial immunotherapy. *Front. Immunol.* **9**, 1774 (2018).
18. Wilkinson, R. W. & Leishman, A. J. Further advances in cancer immunotherapy: going beyond checkpoint blockade. *Front. Immunol.* **9**, 1082 (2018).
19. Martins, F. et al. New therapeutic perspectives to manage refractory immune checkpoint-related toxicities. *Lancet Oncol.* **20**, e54–e64 (2019).
20. Johnson, D. B., Chandra, S. & Sosman, J. A. Immune checkpoint inhibitor toxicity in 2018. *JAMA* **320**, 1702–1703 (2018).
21. Syn, N. L., Teng, M. W. L., Mok, T. S. K. & Soo, R. A. De-novo and acquired resistance to immune checkpoint targeting. *Lancet Oncol.* **18**, e731–e741 (2017).
22. Bo, D. M. et al. New insights into the pharmacological, immunological, and CAR-T-cell approaches in the treatment of hepatocellular carcinoma. *Drug Resist. Update* **51**, 100702 (2020).
23. Eroglu, Z. et al. High response rate to PD-1 blockade in desmoplastic melanomas. *Nature* **553**, 347–350 (2018).
24. Nghiem, P. T. et al. PD-1 blockade with pembrolizumab in advanced merkel-cell carcinoma. *N. Engl. J. Med.* **374**, 2542–2552 (2016).
25. Ansell, S. M. et al. PD-1 blockade with nivolumab in relapsed or refractory Hodgkin's lymphoma. *N. Engl. J. Med.* **372**, 311–319 (2015).
26. Aroldi, F. & Zaniboni, A. Immunotherapy for pancreatic cancer: present and future. *Immunotherapy* **9**, 607–616 (2017).

27. Rizvi, S. et al. Cholangiocarcinoma - evolving concepts and therapeutic strategies. *Nat. Rev. Clin. Oncol.* **15**, 95–111 (2018).
28. Bang, Y. J. et al. Phase III, randomised trial of avelumab versus physician's choice of chemotherapy as third-line treatment of patients with advanced gastric or gastro-oesophageal junction cancer: primary analysis of JAVELIN Gastric 300. *Ann. Oncol.* **29**, 2052–2060 (2018).
29. Morcinek, J. C. et al. Activation of STAT5 triggers proliferation and contributes to anti-apoptotic signalling mediated by the oncogenic Xmrk kinase. *Oncogene* **21**, 1668–1678 (2002).
30. Ferris, R. L. et al. Nivolumab for recurrent squamous-cell carcinoma of the head and neck. *N. Engl. J. Med.* **375**, 1856–1867 (2016).
31. Rosenberg, J. E. et al. Atezolizumab in patients with locally advanced and metastatic urothelial carcinoma who have progressed following treatment with platinum-based chemotherapy: a single-arm, multicentre, phase 2 trial. *Lancet* **387**, 1909–1920 (2016).
32. Bellmunt, J. et al. Pembrolizumab as second-line therapy for advanced urothelial carcinoma. *N. Engl. J. Med.* **376**, 1015–1026 (2017).
33. El-Khoueiry, A. B. et al. Nivolumab in patients with advanced hepatocellular carcinoma (CheckMate 040): an open-label, non-comparative, phase 1/2 dose escalation and expansion trial. *Lancet* **389**, 2492–2502 (2017).
34. Motzer, R. J. et al. Nivolumab versus everolimus in advanced renal-cell carcinoma. *N. Engl. J. Med.* **373**, 1803–1813 (2015).
35. Sharpe, A. H., Wherry, E. J., Ahmed, R. & Freeman, G. J. The function of programmed cell death 1 and its ligands in regulating autoimmunity and infection. *Nat. Immunol.* **8**, 239–245 (2007).
36. Postow, M. A., Sidlow, R. & Hellmann, M. D. Immune-related adverse events associated with immune checkpoint blockade. *N. Engl. J. Med.* **378**, 158–168 (2018).
37. Weber, J. S., Kahler, K. C. & Hauschild, A. Management of immune-related adverse events and kinetics of response with ipilimumab. *J. Clin. Oncol.* **30**, 2691–2697 (2012).
38. Brahmer, J. R. et al. Management of immune-related adverse events in patients treated with immune checkpoint inhibitor therapy: American Society of Clinical Oncology Clinical Practice Guideline. *J. Clin. Oncol.* **36**, 1714–1768 (2018).
39. Liu, J. et al. Assessing immune-related adverse events of efficacious combination immunotherapies in preclinical models of cancer. *Cancer Res.* **76**, 5288–5301 (2016).
40. Michot, J. M. et al. Immune-related adverse events with immune checkpoint blockade: a comprehensive review. *Eur. J. Cancer* **54**, 139–148 (2016).
41. Kumar, V. et al. Current diagnosis and management of immune related adverse events (irAEs) induced by immune checkpoint inhibitor therapy. *Front. Pharm.* **8**, 49 (2017).
42. Champiat, S. et al. Management of immune checkpoint blockade dysimmune toxicities: a collaborative position paper. *Ann. Oncol.* **27**, 559–574 (2016).
43. Dadu, R., Zobniw, C. & Diab, A. Managing adverse events with immune checkpoint agents. *Cancer J.* **22**, 121–129 (2016).
44. Haddad, R. & Saldanha-Araujo, F. Mechanisms of T-cell immunosuppression by mesenchymal stromal cells: what do we know so far? *Biomed. Res. Int.* **2014**, 216806 (2014).
45. Stromnes, I. M., Greenberg, P. D. & Hingorani, S. R. Molecular pathways: myeloid complicity in cancer. *Clin. Cancer Res.* **20**, 5157–5170 (2014).
46. Vitale, I. et al. Macrophages and metabolism in the tumor microenvironment. *Cell Metab.* **30**, 36–50 (2019).
47. Chen, Y. et al. Tumor-associated macrophages: an accomplice in solid tumor progression. *J. Biomed. Sci.* **26**, 78 (2019).
48. Ohue, Y. & Nishikawa, H. Regulatory T (Treg) cells in cancer: can Treg cells be a new therapeutic target? *Cancer Sci.* **110**, 2080–2089 (2019).
49. Chen, H. et al. The new identified biomarkers determine sensitivity to immune checkpoint blockade therapies in melanoma. *Oncoimmunology* **8**, 1608132 (2019).
50. Eliezer, M. V. A. et al. Genomic correlates of response to CTLA-4 blockade in metastatic melanoma. *Science* **350**, 207–211 (2015).
51. Rizvi, N. A. et al. Cancer immunology. Mutational landscape determines sensitivity to PD-1 blockade in non-small cell lung cancer. *Science* **348**, 124–128 (2015).
52. Schreiber, R. D., Old, L. J. & Smyth, M. J. Cancer immunotherapy: integrating immunity's roles in cancer suppression and promotion. *Science* **331**, 1565–1570 (2011).
53. Egeblad, M. & Werb, Z. New functions for the matrix metalloproteinases in cancer progression. *Nat. Rev. Cancer* **2**, 161–174 (2002).
54. Jackson, H. W., Defamie, V., Waterhouse, P. & Khokha, R. TIMPs: versatile extracellular regulators in cancer. *Nat. Rev. Cancer* **17**, 38–53 (2017).
55. Kessenbrock, K., Plaks, V. & Werb, Z. Matrix metalloproteinases: regulators of the tumor microenvironment. *Cell* **141**, 52–67 (2010).

56. Rudd, P. M. et al. Glycosylation and the immune system. *Science* **291**, 2370–2376 (2001).
57. Broz, M. L. et al. Dissecting the tumor myeloid compartment reveals rare activating antigen-presenting cells critical for T cell immunity. *Cancer Cell* **26**, 638–652 (2014).
58. Spranger, S., Bao, R. & Gajewski, T. F. Melanoma-intrinsic beta-catenin signalling prevents anti-tumour immunity. *Nature* **523**, 231–235 (2015).
59. Roberts, E. W. et al. Critical role for CD103(+)/CD141(+) dendritic cells bearing ccr7 for tumor antigen trafficking and priming of T cell immunity in melanoma. *Cancer Cell* **30**, 324–336 (2016).
60. Spranger, S., Dai, D., Horton, B. & Gajewski, T. F. Tumor-residing Batf3 dendritic cells are required for effector T Cell trafficking and adoptive T cell therapy. *Cancer Cell* **31**, 711–723.e714 (2017).
61. Zong, J., Keskinov, A. A., Shurin, G. V. & Shurin, M. R. Tumor-derived factors modulating dendritic cell function. *Cancer Immunol. Immunother.* **65**, 821–833 (2016).
62. Menetrier-Caux, C. et al. Inhibition of the differentiation of dendritic cells from CD34(+) progenitors by tumor cells: role of interleukin-6 and macrophage colony-stimulating factor. *Blood* **92**, 4778–4791 (1998).
63. Yang, A. S. & Lattime, E. C. Tumor-induced interleukin 10 suppresses the ability of splenic dendritic cells to stimulate CD4 and CD8 T-cell responses. *Cancer Res.* **63**, 2150–2157 (2003).
64. Godefroy, E. et al. Matrix metalloproteinase-2 conditions human dendritic cells to prime inflammatory T(H)2 cells via an IL-12- and OX40L-dependent pathway. *Cancer Cell* **19**, 333–346 (2011).
65. Ito, T. et al. TSLP-activated dendritic cells induce an inflammatory T helper type 2 cell response through OX40 ligand. *J. Exp. Med.* **202**, 1213–1223 (2005).
66. Holtzhausen, A. et al. Melanoma-derived Wnt5a promotes local dendritic-cell expression of IDO and immunotolerance: opportunities for pharmacologic enhancement of immunotherapy. *Cancer Immunol. Res.* **3**, 1082–1095 (2015).
67. Hong, Y. et al. beta-catenin promotes regulatory T-cell responses in tumors by inducing vitamin A metabolism in dendritic cells. *Cancer Res.* **75**, 656–665 (2015).
68. Zappasodi, R., Merghoub, T. & Wolchok, J. D. Emerging concepts for immune checkpoint blockade-based combination therapies. *Cancer Cell* **33**, 581–598 (2018).
69. Tumeh, P. C. et al. PD-1 blockade induces responses by inhibiting adaptive immune resistance. *Nature* **515**, 568–571 (2014).
70. Buckanovich, R. J. et al. Endothelin B receptor mediates the endothelial barrier to T cell homing to tumors and disables immune therapy. *Nat. Med.* **14**, 28–36 (2008).
71. Griffioen, A. W. et al. Endothelial intercellular adhesion molecule-1 expression is suppressed in human malignancies: the role of angiogenic factors. *Cancer Res.* **56**, 1111–1117 (1996).
72. Slaney, C. Y., Kershaw, M. H. & Darcy, P. K. Trafficking of T cells into tumors. *Cancer Res.* **74**, 7168–7174 (2014).
73. Peng, D. et al. Epigenetic silencing of TH1-type chemokines shapes tumour immunity and immunotherapy. *Nature* **527**, 249–253 (2015).
74. Salmon, H. et al. Matrix architecture defines the preferential localization and migration of T cells into the stroma of human lung tumors. *J. Clin. Invest.* **122**, 899–910 (2012).
75. Ying, H. et al. Oncogenic Kras maintains pancreatic tumors through regulation of anabolic glucose metabolism. *Cell* **149**, 656–670 (2012).
76. Pylayeva-Gupta, Y. et al. Oncogenic Kras-induced GM-CSF production promotes the development of pancreatic neoplasia. *Cancer Cell* **21**, 836–847 (2012).
77. Collins, M. A. et al. Oncogenic Kras is required for both the initiation and maintenance of pancreatic cancer in mice. *J. Clin. Invest.* **122**, 639–653 (2012).
78. Serrels, A. et al. Nuclear FAK controls chemokine transcription, Tregs, and evasion of anti-tumor immunity. *Cell* **163**, 160–173 (2015).
79. Chapman, N. M., Connolly, S. F., Reinl, E. L. & Houtman, J. C. Focal adhesion kinase negatively regulates Lck function downstream of the T cell antigen receptor. *J. Immunol.* **191**, 6208–6221 (2013).
80. Jiang, H. et al. Targeting focal adhesion kinase renders pancreatic cancers responsive to checkpoint immunotherapy. *Nat. Med.* **22**, 851–860 (2016).
81. Benci, J. L. et al. Tumor interferon signaling regulates a multigenic resistance program to immune checkpoint blockade. *Cell* **167**, 1540–1554.e1512 (2016).
82. Garcia-Diaz, A. et al. Interferon receptor signaling pathways regulating PD-L1 and PD-L2 expression. *Cell Rep.* **19**, 1189–1201 (2017).
83. Loke, P. & Allison, J. P. PD-L1 and PD-L2 are differentially regulated by Th1 and Th2 cells. *Proc. Natl Acad. Sci. USA* **100**, 5336–5341 (2003).
84. Tseng, S. Y. et al. B7-DC, a new dendritic cell molecule with potent costimulatory properties for T cells. *J. Exp. Med.* **193**, 839–846 (2001).
85. Zaretsky, J. M. et al. Mutations associated with acquired resistance to PD-1 blockade in melanoma. *N. Engl. J. Med.* **375**, 819–829 (2016).
86. Dang, C. V. Links between metabolism and cancer. *Genes Dev.* **26**, 877–890 (2012).
87. Carvalho, K. C. et al. GLUT1 expression in malignant tumors and its use as an immunodiagnostic marker. *Clinics (Sao Paulo)* **66**, 965–972 (2011).
88. Wofford, J. A. et al. IL-7 promotes Glut1 trafficking and glucose uptake via STAT5-mediated activation of Akt to support T-cell survival. *Blood* **111**, 2101–2111 (2008).
89. Singer, K. et al. Warburg phenotype in renal cell carcinoma: high expression of glucose-transporter 1 (GLUT-1) correlates with low CD8(+) T-cell infiltration in the tumor. *Int. J. Cancer* **128**, 2085–2095 (2011).
90. Ottensmeier, C. H. et al. Upregulated glucose metabolism correlates inversely with CD8+ T-cell infiltration and survival in squamous cell carcinoma. *Cancer Res.* **76**, 4136–4148 (2016).
91. Macintyre, A. N. et al. The glucose transporter Glut1 is selectively essential for CD4 T cell activation and effector function. *Cell Metab.* **20**, 61–72 (2014).
92. Cretenet, G. et al. Cell surface Glut1 levels distinguish human CD4 and CD8 T lymphocyte subsets with distinct effector functions. *Sci. Rep.* **6**, 24129 (2016).
93. Harmon, C. et al. Lactate-mediated acidification of tumor microenvironment induces apoptosis of liver-resident NK cells in colorectal liver metastasis. *Cancer Immunol. Res.* **7**, 335–346 (2019).
94. Fischer, K. et al. Inhibitory effect of tumor cell-derived lactic acid on human T cells. *Blood* **109**, 3812–3819 (2007).
95. Brand, A. et al. LDHA-associated lactic acid production blunts tumor immunosurveillance by T and NK cells. *Cell Metab.* **24**, 657–671 (2016).
96. Lemos, H., Huang, L., Prendergast, G. C. & Mellor, A. L. Immune control by amino acid catabolism during tumorigenesis and therapy. *Nat. Rev. Cancer* **19**, 162–175 (2019).
97. Prendergast, G. C. et al. IDO2 in immunomodulation and autoimmune disease. *Front. Immunol.* **5**, 585 (2014).
98. Gielen, P. R. et al. Elevated levels of polymorphonuclear myeloid-derived suppressor cells in patients with glioblastoma highly express S100A8/9 and arginase and suppress T cell function. *Neuro Oncol.* **18**, 1253–1264 (2016).
99. Badawy, A. A. Tryptophan availability for kynurenine pathway metabolism across the life span: Control mechanisms and focus on aging, exercise, diet and nutritional supplements. *Neuropharmacology* **112**, 248–263 (2017).
100. Platten, M., Wick, W. & Van den Eynde, B. J. Tryptophan catabolism in cancer: beyond IDO and tryptophan depletion. *Cancer Res.* **72**, 5435–5440 (2012).
101. Geiger, R. et al. L-arginine modulates T cell metabolism and enhances survival and anti-tumor activity. *Cell* **167**, 829–842.e813 (2016).
102. Sahm, F. et al. The endogenous tryptophan metabolite and NAD+ precursor quinolinic acid confers resistance of gliomas to oxidative stress. *Cancer Res.* **73**, 3225–3234 (2013).
103. Triplett, T. A. et al. Reversal of indoleamine 2,3-dioxygenase-mediated cancer immune suppression by systemic kynurenine depletion with a therapeutic enzyme. *Nat. Biotechnol.* **36**, 758–764 (2018).
104. Gubin, M. M. et al. Checkpoint blockade cancer immunotherapy targets tumour-specific mutant antigens. *Nature* **515**, 577–581 (2014).
105. Yadav, M. et al. Predicting immunogenic tumour mutations by combining mass spectrometry and exome sequencing. *Nature* **515**, 572–576 (2014).
106. Castle, J. C. et al. Exploiting the mutanome for tumor vaccination. *Cancer Res.* **72**, 1081–1091 (2012).
107. Duraiswamy, J., Kaluza, K. M., Freeman, G. J. & Coukos, G. Dual blockade of PD-1 and CTLA-4 combined with tumor vaccine effectively restores T-cell rejection function in tumors. *Cancer Res.* **73**, 3591–3603 (2013).
108. Hiif, N. et al. Actively personalized vaccination trial for newly diagnosed glioblastoma. *Nature* **565**, 240–245 (2019).
109. Keskin, D. B. et al. Neoantigen vaccine generates intratumoral T cell responses in phase Ib glioblastoma trial. *Nature* **565**, 234–239 (2019).
110. Ott, P. A. et al. An immunogenic personal neoantigen vaccine for patients with melanoma. *Nature* **547**, 217–221 (2017).
111. Sahin, U. et al. Personalized RNA mutanome vaccines mobilize poly-specific therapeutic immunity against cancer. *Nature* **547**, 222–226 (2017).
112. Garg, A. D., Coulie, P. G., Van den Eynde, B. J. & Agostinis, P. Integrating next-generation dendritic cell vaccines into the current cancer immunotherapy landscape. *Trends Immunol.* **38**, 577–593 (2017).
113. Kantoff, P. W. et al. Sipuleucel-T immunotherapy for castration-resistant prostate cancer. *N. Engl. J. Med.* **363**, 411–422 (2010).
114. Bulloch, M. N., Elayan, M. M. & Renfro, H. R. Sipuleucel-T: a therapeutic cancer vaccine for the treatment of castration- or hormone-refractory prostate cancer. *Expert Rev. Clin. Pharm.* **4**, 685–692 (2011).
115. Handy, C. E. & Antonarakis, E. S. Sipuleucel-T for the treatment of prostate cancer: novel insights and future directions. *Future Oncol.* **14**, 907–917 (2018).
116. Crawford, E. D. et al. Optimal timing of sipuleucel-T treatment in metastatic castration-resistant prostate cancer. *Can. J. Urol.* **22**, 8048–8055 (2015).

117. Van den Bergh, J. M. J. et al. Monocyte-derived dendritic cells with silenced PD-1 ligands and transpresenting interleukin-15 stimulate strong tumor-reactive T-cell expansion. *Cancer Immunol. Res.* **5**, 710–715 (2017).
118. Hobo, W. et al. Improving dendritic cell vaccine immunogenicity by silencing PD-1 ligands using siRNA-lipid nanoparticles combined with antigen mRNA electroporation. *Cancer Immunol. Immunother.* **62**, 285–297 (2013).
119. Daneshmandi, S., Pourfathollah, A. A., Karimi, M. H. & Emadi-Baygi, M. PDL-1/PDL-2 blockade in mice dendritic cells by RNAi techniques to induce antitumor immunity. *Immunotherapy* **7**, 1145–1158 (2015).
120. Boudewijns, S. et al. Ipilimumab administered to metastatic melanoma patients who progressed after dendritic cell vaccination. *Oncoimmunology* **5**, e1201625 (2016).
121. Wilgenhof, S. et al. Phase II study of autologous monocyte-derived mRNA electroporated dendritic cells (TriMixDC-MEL) plus ipilimumab in patients with pretreated advanced melanoma. *J. Clin. Oncol.* **34**, 1330–1338 (2016).
122. Kroemer, G., Galluzzi, L., Kepp, O. & Zitvogel, L. Immunogenic cell death in cancer therapy. *Annu. Rev. Immunol.* **31**, 51–72 (2013).
123. Galluzzi, L. et al. Immunogenic cell death in cancer and infectious disease. *Nat. Rev. Immunol.* **17**, 97–111 (2017).
124. Krysko, D. V. et al. Immunogenic cell death and DAMPs in cancer therapy. *Nat. Rev. Cancer* **12**, 860–875 (2012).
125. Galluzzi, L. et al. Essential versus accessory aspects of cell death: recommendations of the NCCD 2015. *Cell Death Differ.* **22**, 58–73 (2015).
126. Galluzzi, L. et al. Molecular mechanisms of cell death: recommendations of the Nomenclature Committee on Cell Death 2018. *Cell Death Differ.* **25**, 486–541 (2018).
127. Galluzzi, L. et al. Molecular definitions of cell death subroutines: recommendations of the Nomenclature Committee on Cell Death 2012. *Cell Death Differ.* **19**, 107–120 (2012).
128. Green, D. R., Ferguson, T., Zitvogel, L. & Kroemer, G. Immunogenic and tolerogenic cell death. *Nat. Rev. Immunol.* **9**, 353–363 (2009).
129. Kepp, O. et al. Consensus guidelines for the detection of immunogenic cell death. *Oncoimmunology* **3**, e955691 (2014).
130. Michaud, M. et al. Autophagy-dependent anticancer immune responses induced by chemotherapeutic agents in mice. *Science* **334**, 1573–1577 (2011).
131. Vacchelli, E. et al. Chemotherapy-induced antitumor immunity requires formyl peptide receptor 1. *Science* **350**, 972–978 (2015).
132. Obeid, M. et al. Calreticulin exposure dictates the immunogenicity of cancer cell death. *Nat. Med.* **13**, 54–61 (2007).
133. Apetoh, L. et al. Toll-like receptor 4-dependent contribution of the immune system to anticancer chemotherapy and radiotherapy. *Nat. Med.* **13**, 1050–1059 (2007).
134. Sistigu, A. et al. Cancer cell-autonomous contribution of type I interferon signaling to the efficacy of chemotherapy. *Nat. Med.* **20**, 1301–1309 (2014).
135. Zitvogel, L. et al. Type I interferons in anticancer immunity. *Nat. Rev. Immunol.* **15**, 405–414 (2015).
136. Galluzzi, L. et al. Activating autophagy to potentiate immunogenic chemotherapy and radiation therapy. *Nat. Rev. Clin. Oncol.* **14**, 247–258 (2017).
137. Panaretakis, T. et al. Mechanisms of pre-apoptotic calreticulin exposure in immunogenic cell death. *EMBO J.* **28**, 578–590 (2009).
138. Gentili, M. et al. Transmission of innate immune signaling by packaging of cGAMP in viral particles. *Science* **349**, 1232–1236 (2015).
139. Galluzzi, L., Kepp, O., Chan, F. K. & Kroemer, G. Necroptosis: mechanisms and relevance to disease. *Annu. Rev. Pathol.* **12**, 103–130 (2017).
140. Kepp, O. et al. Crosstalk between ER stress and immunogenic cell death. *Cytokine Growth Factor Rev.* **24**, 311–318 (2013).
141. Ma, Y., Galluzzi, L., Zitvogel, L. & Kroemer, G. Autophagy and cellular immune responses. *Immunity* **39**, 211–227 (2013).
142. Garg, A. D. et al. Trial watch: Immunogenic cell death induction by anticancer chemotherapeutics. *Oncoimmunology* **6**, e1386829 (2017).
143. Pol, J. et al. Trial watch: immunogenic cell death inducers for anticancer chemotherapy. *Oncoimmunology* **4**, e1008866 (2015).
144. Bezu, L. et al. Combinatorial strategies for the induction of immunogenic cell death. *Front. Immunol.* **6**, 187 (2015).
145. Menger, L. et al. Cardiac glycosides exert anticancer effects by inducing immunogenic cell death. *Sci. Transl. Med.* **4**, 143ra199 (2012).
146. Yang, H. et al. STAT3 inhibition enhances the therapeutic efficacy of immunogenic chemotherapy by stimulating type 1 interferon production by cancer cells. *Cancer Res.* **75**, 3812–3822 (2015).
147. Dudek, A. M. et al. Inducers of immunogenic cancer cell death. *Cytokine Growth Factor Rev.* **24**, 319–333 (2013).
148. Kepp, O., Senovilla, L. & Kroemer, G. Immunogenic cell death inducers as anticancer agents. *Oncotarget* **5**, 5190–5191 (2014).
149. Sukkurwala, A. Q. et al. Screening of novel immunogenic cell death inducers within the NCI Mechanistic Diversity Set. *Oncoimmunology* **3**, e28473 (2014).
150. Galluzzi, L. et al. Immunological effects of conventional chemotherapy and targeted anticancer agents. *Cancer Cell* **28**, 690–714 (2015).
151. Vacchelli, E. et al. Trial watch: chemotherapy with immunogenic cell death inducers. *Oncoimmunology* **3**, e27878 (2014).
152. Yang, H. et al. Contribution of RIP3 and MLKL to immunogenic cell death signaling in cancer chemotherapy. *Oncoimmunology* **5**, e1149673 (2016).
153. Casares, N. et al. Caspase-dependent immunogenicity of doxorubicin-induced tumor cell death. *J. Exp. Med.* **202**, 1691–1701 (2005).
154. Ghiringhelli, F. et al. Activation of the NLRP3 inflammasome in dendritic cells induces IL-1 β -dependent adaptive immunity against tumors. *Nat. Med.* **15**, 1170–1178 (2009).
155. Ma, Y. et al. Anticancer chemotherapy-induced intratumoral recruitment and differentiation of antigen-presenting cells. *Immunity* **38**, 729–741 (2013).
156. Ma, Y. et al. Contribution of IL-17-producing gamma delta T cells to the efficacy of anticancer chemotherapy. *J. Exp. Med.* **208**, 491–503 (2011).
157. Yamazaki, T. et al. Defective immunogenic cell death of HMGB1-deficient tumors: compensatory therapy with TLR4 agonists. *Cell Death Differ.* **21**, 69–78 (2014).
158. Zitvogel, L. et al. Immunological off-target effects of imatinib. *Nat. Rev. Clin. Oncol.* **13**, 431–446 (2016).
159. Kroemer, G. et al. Natural and therapy-induced immunosurveillance in breast cancer. *Nat. Med.* **21**, 1128–1138 (2015).
160. Spisek, R. et al. Bortezomib enhances dendritic cell (DC)-mediated induction of immunity to human myeloma via exposure of cell surface heat shock protein 90 on dying tumor cells: therapeutic implications. *Blood* **109**, 4839–4845 (2007).
161. Ladoire, S. et al. In situ immune response after neoadjuvant chemotherapy for breast cancer predicts survival. *J. Pathol.* **224**, 389–400 (2011).
162. Senovilla, L. et al. An immunosurveillance mechanism controls cancer cell ploidy. *Science* **337**, 1678–1684 (2012).
163. Mahoney, K. M., Rennert, P. D. & Freeman, G. J. Combination cancer immunotherapy and new immunomodulatory targets. *Nat. Rev. Drug Discov.* **14**, 561–584 (2015).
164. Sharma, P. & Allison, J. P. Immune checkpoint targeting in cancer therapy: toward combination strategies with curative potential. *Cell* **161**, 205–214 (2015).
165. Hahn, A. W., Gill, D. M., Pal, S. K. & Agarwal, N. The future of immune checkpoint cancer therapy after PD-1 and CTLA-4. *Immunotherapy* **9**, 681–692 (2017).
166. Ghebeh, H. et al. Doxorubicin downregulates cell surface B7-H1 expression and upregulates its nuclear expression in breast cancer cells: role of B7-H1 as an anti-apoptotic molecule. *Breast Cancer Res.* **12**, R48 (2010).
167. Lesterhuis, W. J. et al. Synergistic effect of CTLA-4 blockade and cancer chemotherapy in the induction of anti-tumor immunity. *PLoS ONE* **8**, e61895 (2013).
168. Liu, L. et al. The BRAF and MEK inhibitors dabrafenib and trametinib: effects on immune function and in combination with immunomodulatory antibodies targeting PD-1, PD-L1, and CTLA-4. *Clin. Cancer Res.* **21**, 1639–1651 (2015).
169. Hossain, D. M. S. et al. Dinaciclib induces immunogenic cell death and enhances anti-PD1-mediated tumor suppression. *J. Clin. Invest.* **128**, 644–654 (2018).
170. Ariyan, C. E. et al. Robust antitumor responses result from local chemotherapy and CTLA-4 blockade. *Cancer Immunol. Res.* **6**, 189–200 (2018).
171. LaRocca, C. J. & Warner, S. G. Oncolytic viruses and checkpoint inhibitors: combination therapy in clinical trials. *Clin. Transl. Med.* **7**, 35 (2018).
172. Harrington, K. et al. Optimizing oncolytic virotherapy in cancer treatment. *Nat. Rev. Drug Discov.* **18**, 689–706 (2019).
173. Bommareddy, P. K., Shettigar, M. & Kaufman, H. L. Integrating oncolytic viruses in combination cancer immunotherapy. *Nat. Rev. Immunol.* **18**, 498–513 (2018).
174. Marchini, A. et al. Immune conversion of tumor microenvironment by oncolytic viruses: the protoparvovirus H-1PV case study. *Front. Immunol.* **10**, 1848 (2019).
175. Kaufman, H. L., Kohlhapp, F. J. & Zloza, A. Oncolytic viruses: a new class of immunotherapy drugs. *Nat. Rev. Drug Discov.* **14**, 642–662 (2015).
176. Ledford, H. Cancer-fighting viruses win approval. *Nature* **526**, 622–623 (2015).
177. Andtbacka, R. H. et al. Talimogene laherparepvec improves durable response rate in patients with advanced melanoma. *J. Clin. Oncol.* **33**, 2780–2788 (2015).
178. Chesney, J. et al. Randomized, Open-Label Phase II Study evaluating the efficacy and safety of talimogene laherparepvec in combination with ipilimumab versus ipilimumab alone in patients with advanced, unresectable melanoma. *J. Clin. Oncol.* **36**, 1658–1667 (2018).
179. Lee, S. & Margolin, K. Cytokines in cancer immunotherapy. *Cancers (Basel)* **3**, 3856–3893 (2011).
180. Berraondo, P. et al. Cytokines in clinical cancer immunotherapy. *Br. J. Cancer* **120**, 6–15 (2019).
181. Rosenberg, S. A. IL-2: the first effective immunotherapy for human cancer. *J. Immunol.* **192**, 5451–5458 (2014).
182. Lasek, W., Zagodzón, R. & Jakobsiak, M. Interleukin 12: still a promising candidate for tumor immunotherapy? *Cancer Immunol. Immunother.* **63**, 419–435 (2014).
183. Charych, D. et al. Modeling the receptor pharmacology, pharmacokinetics, and pharmacodynamics of NKTR-214, a kinetically-controlled interleukin-2 (IL2) receptor agonist for cancer immunotherapy. *PLoS ONE* **12**, e0179431 (2017).

184. Diab, A. et al. Bempregaldesleukin (NKTR-214) plus nivolumab in patients with advanced solid tumors: phase I dose-escalation study of safety, efficacy, and immune activation (PIVOT-02). *Cancer Discov.* **10**, 1158–1173 (2020).
185. Medina-Echeverez, J. et al. Successful colon cancer eradication after chemimmunotherapy is associated with profound phenotypic change of intratumoral myeloid cells. *J. Immunol.* **186**, 807–815 (2011).
186. Leonard, J. P. et al. Effects of single-dose interleukin-12 exposure on interleukin-12-associated toxicity and interferon-gamma production. *Blood* **90**, 2541–2548 (1997).
187. Algazi, A. et al. Intratumoral delivery of tavokinogene telseplasmid yields systemic immune responses in metastatic melanoma patients. *Ann. Oncol.* **31**, 532–540 (2020).
188. Everly, J. J. & Lonial, S. Immunomodulatory effects of human recombinant granulocyte-macrophage colony-stimulating factor (rhuGM-CSF): evidence of antitumor activity. *Expert Opin. Biol. Ther.* **5**, 293–311 (2005).
189. Hodi, F. S. et al. Ipilimumab plus sargramostim vs ipilimumab alone for treatment of metastatic melanoma: a randomized clinical trial. *JAMA* **312**, 1744–1753 (2014).
190. Fukumura, D. et al. Enhancing cancer immunotherapy using antiangiogenics: opportunities and challenges. *Nat. Rev. Clin. Oncol.* **15**, 325–340 (2018).
191. Shrimali, R. K. et al. Antiangiogenic agents can increase lymphocyte infiltration into tumor and enhance the effectiveness of adoptive immunotherapy of cancer. *Cancer Res.* **70**, 6171–6180 (2010).
192. Kandalaf, L. E., Motz, G. T., Busch, J. & Coukos, G. Angiogenesis and the tumor vasculature as antitumor immune modulators: the role of vascular endothelial growth factor and endothelin. *Curr. Top. Microbiol. Immunol.* **344**, 129–148 (2011).
193. Papat, S. et al. Anti-angiogenic agents in the age of resistance to immune checkpoint inhibitors: Do they have a role in non-oncogene-addicted non-small cell lung cancer? *Lung Cancer* **144**, 76–84 (2020).
194. Huang, Y. et al. Vascular normalizing doses of antiangiogenic treatment reprogram the immunosuppressive tumor microenvironment and enhance immunotherapy. *Proc. Natl Acad. Sci. USA* **109**, 17561–17566 (2012).
195. Li, B. et al. Vascular endothelial growth factor blockade reduces intratumoral regulatory T cells and enhances the efficacy of a GM-CSF-secreting cancer immunotherapy. *Clin. Cancer Res.* **12**, 6808–6816 (2006).
196. Rini, B. I. et al. Pembrolizumab plus axitinib versus sunitinib for advanced renal-cell carcinoma. *N. Engl. J. Med.* **380**, 1116–1127 (2019).
197. Finn, R. S. et al. Atezolizumab plus bevacizumab in unresectable hepatocellular carcinoma. *N. Engl. J. Med.* **382**, 1894–1905 (2020).
198. Sheng, X. et al. Axitinib in combination with toripalimab, a humanized immunoglobulin G4 monoclonal antibody against programmed cell death-1, in patients with metastatic mucosal melanoma: an open-label phase IB trial. *J. Clin. Oncol.* **37**, 2987–2999 (2019).
199. Herbst, R. S. et al. Ramucirumab plus pembrolizumab in patients with previously treated advanced non-small-cell lung cancer, gastro-oesophageal cancer, or urothelial carcinomas (JVDF): a multicohort, non-randomised, open-label, phase 1a/b trial. *Lancet Oncol.* **20**, 1109–1123 (2019).
200. Atkins, M. B. et al. Axitinib in combination with pembrolizumab in patients with advanced renal cell cancer: a non-randomised, open-label, dose-finding, and dose-expansion phase 1b trial. *Lancet Oncol.* **19**, 405–415 (2018).
201. Rao, Q. et al. Clinical benefits of PD-1/PD-L1 inhibitors in advanced hepatocellular carcinoma: a systematic review and meta-analysis. *Hepatol. Int.* **14**, 765–775 (2020).
202. Biffi, G. & Tuveson, D. A. Deciphering cancer fibroblasts. *J. Exp. Med.* **215**, 2967–2968 (2018).
203. Biffi, G. et al. IL1-Induced JAK/STAT signaling is antagonized by TGFbeta to shape CAF heterogeneity in pancreatic ductal adenocarcinoma. *Cancer Discov.* **9**, 282–301 (2019).
204. Feig, C. et al. Targeting CXCL12 from FAP-expressing carcinoma-associated fibroblasts synergizes with anti-PD-L1 immunotherapy in pancreatic cancer. *Proc. Natl Acad. Sci. USA* **110**, 20212–20217 (2013).
205. Bronte, V. et al. Recommendations for myeloid-derived suppressor cell nomenclature and characterization standards. *Nat. Commun.* **7**, 12150 (2016).
206. Deng, Y. et al. Hepatic carcinoma-associated fibroblasts enhance immune suppression by facilitating the generation of myeloid-derived suppressor cells. *Oncogene* **36**, 1090–1101 (2017).
207. Hartmann, N. et al. Prevailing role of contact guidance in intrastromal T-cell trapping in human pancreatic cancer. *Clin. Cancer Res.* **20**, 3422–3433 (2014).
208. Norton, J. et al. Pancreatic cancer associated fibroblasts (CAF): under-explored target for pancreatic cancer treatment. *Cancers (Basel)*. **12**, 1347 (2020).
209. Cheng, Y. Q. et al. Modifying the tumour microenvironment and reverting tumour cells: New strategies for treating malignant tumours. *Cell Prolif.* **53**, e12865 (2020).
210. Mariathasan, S. et al. TGFbeta attenuates tumour response to PD-L1 blockade by contributing to exclusion of T cells. *Nature* **554**, 544–548 (2018).
211. Perez-Schindler, J. et al. The transcriptional coactivator PGC-1alpha is dispensable for chronic overload-induced skeletal muscle hypertrophy and metabolic remodeling. *Proc. Natl Acad. Sci. USA* **110**, 20314–20319 (2013).
212. Zhao, J. et al. Stromal modulation reverses primary resistance to immune checkpoint blockade in pancreatic cancer. *ACS Nano* **12**, 9881–9893 (2018).



Open Access This article is licensed under a Creative Commons Attribution 4.0 International License, which permits use, sharing, adaptation, distribution and reproduction in any medium or format, as long as you give appropriate credit to the original author(s) and the source, provide a link to the Creative Commons license, and indicate if changes were made. The images or other third party material in this article are included in the article's Creative Commons license, unless indicated otherwise in a credit line to the material. If material is not included in the article's Creative Commons license and your intended use is not permitted by statutory regulation or exceeds the permitted use, you will need to obtain permission directly from the copyright holder. To view a copy of this license, visit <http://creativecommons.org/licenses/by/4.0/>.

© The Author(s) 2021